

## PROJECT UPDATE

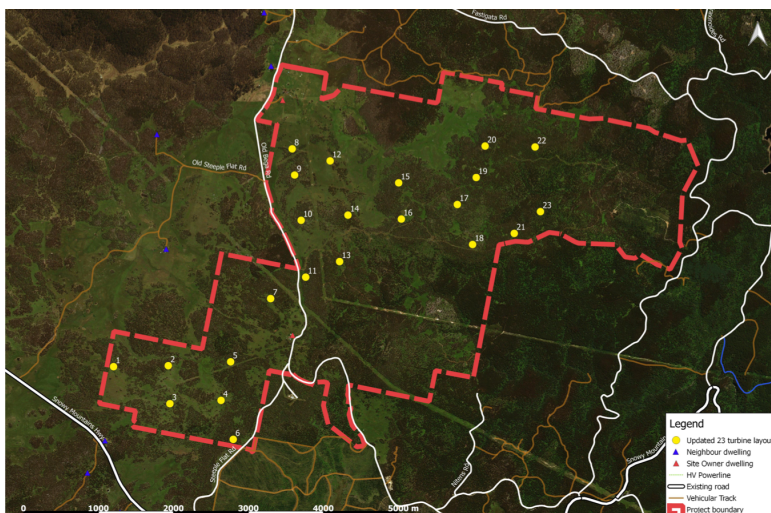
It has been a busy time at Granite Hills Wind Farm. Key changes include:

- The Secretary's Environment Assessment Requirements (SEARs) has been updated. You can read the new version on our website.
- Project timeline has been updated.
- A new hugely improved wind turbine layout.
- Stakeholder engagement is ongoing. Recently we met with the Snowy-Monaro Fire Control Centre and Rural Fire Service (RFS).

## NEW TURBINE LAYOUT

Following feedback from the community, the independent environmental specialist and other key specialists such as Broadcast Australia, we completed a full review of the project design. As a result, a new layout with 23 turbines has been developed. Studies to finalise the Environmental Impact Statement (EIS) will be based on a total tip height of up to 230 metres for each turbine. When compared to the previous 32 turbine layout, this new layout creates a number of positive changes:

- It significantly increases the distance from turbines to nearby houses
- It reduces the number of turbines by about 30%
- Massive reduction in infrastructure required of over 30%
- The nearest turbine will be 50% further away from the communications tower
- We have voluntarily committed to avoid the sensitive Eastern side of the site altogether for environmental reasons.



*New site layout below. Map is also available on the website.*

With the new layout now complete, studies will be finalised by independent specialists to determine the constraints and opportunities of the project. This includes assessments on birds, visual, noise, water, transportation, waste and more.

Once complete the studies will be reviewed by the New South Wales Department of Planning, Industry and Environment and the community will be given opportunity to review and comment.

## WELCOME

Our newsletters focus on updating you about the project, sharing any news, events or engagement activities in the community.

Visit [granitehillswindfarm.com](http://granitehillswindfarm.com) and register your interest to receive these updates about the project via email.

## ABOUT THE PROJECT

Granite Hills Wind Farm is a State Significant Development, situated in Steeple Flat, approximately 12 kilometres South East of Nimmitabel in New South Wales. When complete the project will comprise of up to 23-wind turbines, with approximately 4-6 megawatts capacity and a maximum tip height of 230 metres. The 132MW wind farm would generate enough clean energy for around 50,000 homes.

## STAY IN TOUCH

If you have any questions or would like to know more about the project, please send an email to [granitehills@akuoenergy.com](mailto:granitehills@akuoenergy.com) or phone 1800 961 761.

### COMMUNITY CONSULTATIVE COMMITTEE

The last meeting was held on Tuesday 26 November 2019. Minutes and presentations from all CCC meetings can be found on the project website. Every meeting is chaired by an Independent Chair, Peter Gordon. Peter can be contacted via [peter.gordon@charterpoint.com.au](mailto:peter.gordon@charterpoint.com.au) or call 0417 064 767. The list of members is available on our website.

CCC meetings ensure the community and stakeholder groups are informed about the project status, consulted on the progress of the project plans and any proposed changes. Members are also able to provide feedback on issues that may arise during the development of the project. The next CCC meeting will held on Tuesday 30 July 2019.

### A PROUD SHOW SPONSOR

Granite Hills Wind Farm is proud to be a Gold Sponsor of the 2020 Nimmitabel Show. We will be at the Show on 1st February 2020, to provide a face-to-face opportunity for the local community to discuss renewable energy and ask questions about the project.

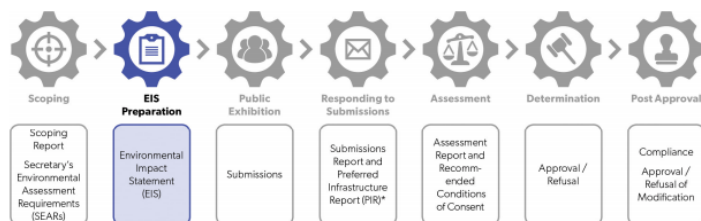
### BUSHFIRE MITIGATION AND MANAGEMENT UPDATE

Granite Hills Wind Farm has engaged the Snowy-Monaro and Bombala Fire Control Centre (FCC) and local Rural Fire Services (RFS) to discuss and further mitigate bushfire risk.

Following the engagement, the FCC and RFS representatives confirmed wind farms are not a major issue or risk to firefighting. Existing wind farms, including those on the Monaro, are generally beneficial to their operations with improved access roads and fire breaks. The FCC also confirmed turbines are treated like any known obstacle in the area and are not seen as a problem for on ground or aerial bushfire operations.

Granite Hills and the FCC are looking at ways to work together on the design and through the construction phase to ensure best fire safety practices are implemented. The local RFS brigades (Snowy-Monaro, Nimmitabel and Bemboka) will be visiting the site in 2020 and have agreed to speak with the CCC in the new year. Our thanks goes out to the brave volunteers who dedicate their lives in fighting Australia's fires.

### ENVIRONMENTAL IMPACT ASSESSMENT TIMELINE



### PROJECT TIMELINE

Activity	Expected Date
SEARs Update	Complete
Layout Update	Complete
Finalisation of EIS Studies	Q2 2020
Submission of EIS	Q3 2020
Period for Public Comment	Q3 2020
EIS Determination	Q4 2020/Q1 2021
Financial Close	Q2/Q3 2021
Start Construction (18-24 Months)	Q3/4 2021
Commercial Operation Date (COD)	Q3/Q4 2023

### STAY IN TOUCH

If you have any questions or would like to know more about the project, please send an email to [granitehills@akuoenergy.com](mailto:granitehills@akuoenergy.com) or phone 1800 961 761