



# Granite Hills Wind Farm

## CCC Meeting #1

Confidentiel

03.10.2017



# Agenda



1. Who we are
2. Presentation of Granite Hills Wind Farm
3. Project Status Update
  1. Current Status
  2. Next Steps
  3. Construction
  4. Operation
4. Contact

# Who we are



- Granite Hills Wind Farm Pty Ltd is a project company run in partnership between local company Willy Willy and a leading French renewable energy company Akuo Energy. This partnership combines local knowledge with international project experience and track record.



- Akuo Energy was first established in 2007 and is committed to developing innovative projects that deliver long-term value to communities throughout the world. Akuo remains actively involved throughout the lifetime of the project, from initial development, construction and operation of the project.



- Granite Hills is the first project in Australia, a flagship for our company and commitment to the market.

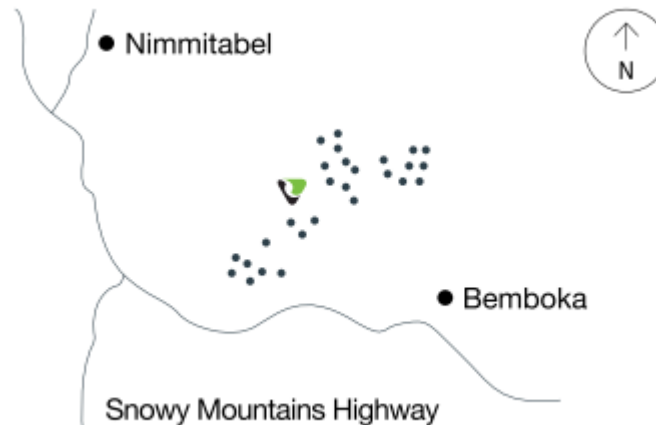
**962 MW**  
IN OPERATION AND UNDER  
CONSTRUCTION

**49 plants**  
IN OPERATION AND UNDER  
CONSTRUCTION

# Granite Hills Wind Farm

## Location and size

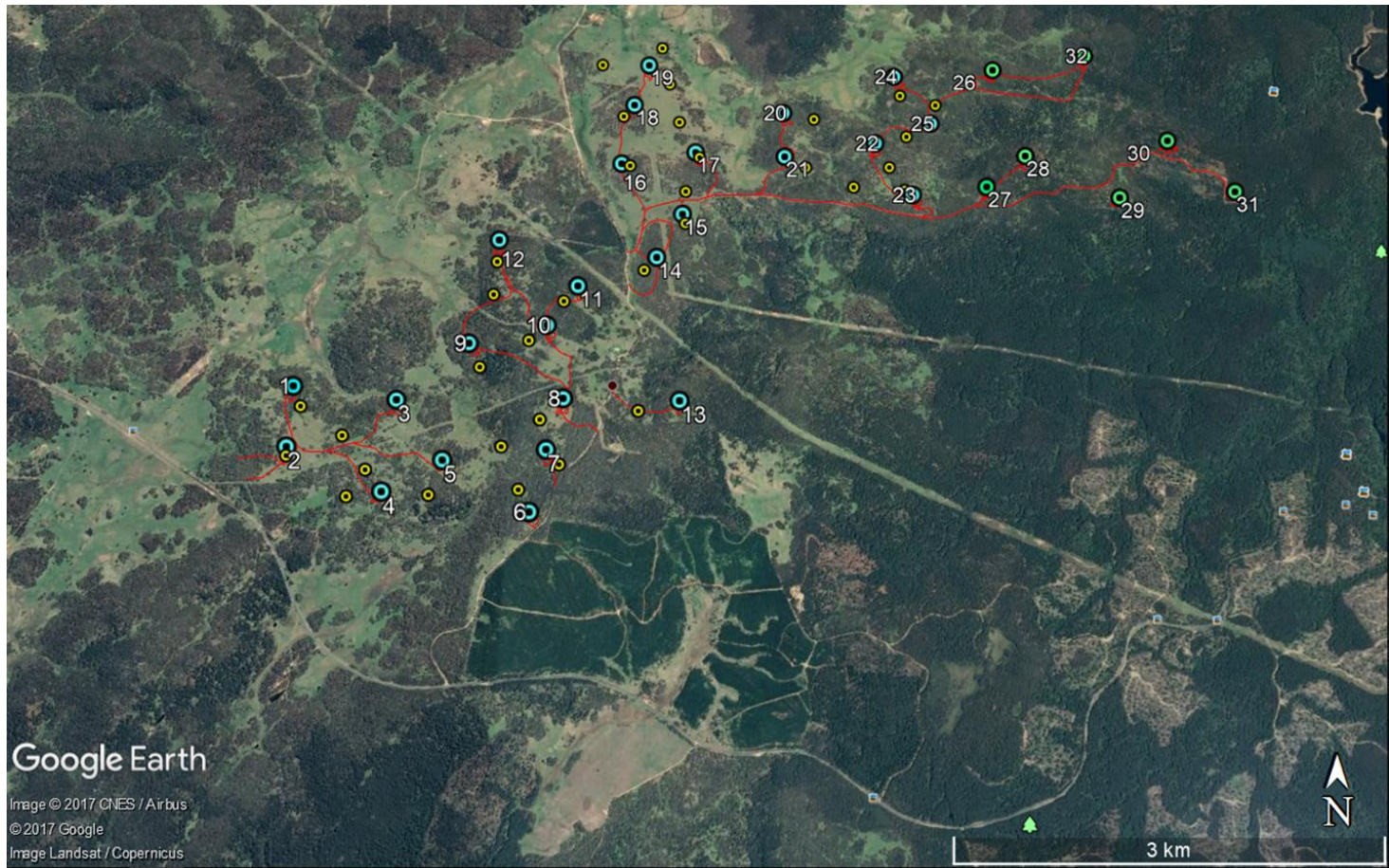
- The wind farm is located near Steeple Flat, 12 km South-East of Nimmitabel



- The wind farm will comprise a total of 25-32 turbines
  - Advancements in wind turbine technology allows us to reach a total installed capacity of 100-120 MW with less turbines (Boco Rock Wind Farm is 113 MW for 67 turbines)

# Granite Hills Wind Farm

Indicative Wind Farm & Road Layout – as of 3 October 2017



# Project Status Update

## Current Status



- GHWF is now undertaking preparational studies for the submission of a final Ecological Impact Statement (EIS) to the Department of Planning and Environment (DPE)
  - Target submission early 2018
  - Following DPE review, the EIS will be made available for public exhibition for 30 days
  - We welcome your feedback on the EIS during this time
- We continue to work with the Office of Environment and Heritage (OEH) to refine the biodiversity studies
  - Essential to evaluate biodiversity impact of the wind farm project and part of the EIS submission
- First GHWF Community Consultative Committee (CCC) Meeting Oct 3<sup>rd</sup>
  - CCC comprised of 7 local community members, overseen by an independent chair

# Project Status Update

## Next Steps



- Following submission of Environmental Impact Statement (EIS) to the Department of Planning and Environment (DPE), a determination for the project will be made by the authorities
  - Expected EIS submission early 2018
  - DPE determination by mid-late 2018 → Development Approval
- Second CCC Meeting scheduled for November
  - To discuss progress of draft EIS and other matters raised in first CCC Meeting
- Other development activities will run in parallel
  - Selection of wind turbine supplier and electrical sub-contractor
  - Project financing
  - Additional permitting requirements

# Project Status Update

## Construction

---



- Construction is planned to start in 2019 and will take approximately 1-2 years



- It will involve construction of the following:
  - Internal access roads throughout the wind farm site
  - Installation of 25-32 wind turbines
  - Underground cabling connecting the turbines to one substation
  - One central substation providing connection into the grid
  - Connection of the substation into the existing Cooma-Bega 132 kV overhead line





# Project Status Update

## Operation

---

- Once commissioned, the wind farm be operational and provide electricity to the grid for 25 years
- Akuo Energy will remain involved as operational manager of the wind farm, therefore will remain accountable throughout the life of the project
- Akuo will also remain part of the community over these 25 years and is always open to new ideas for involvement



# Contact

Please keep in touch!



- Website: [www.granitehillswindfarm.com.au](http://www.granitehillswindfarm.com.au)
- You can contact us directly:
  - Through the website via the Contact Us section
  - By phone or email - Antony's contact details:  
antony.shingler@willywilly.com.au / (02) 8999 1988
- Via the CCC
  - We will be holding regular CCC meetings
  - Please be active in your role as connection between community and GHWF
- Regular newsletters to keep you updated on the current status and next steps