

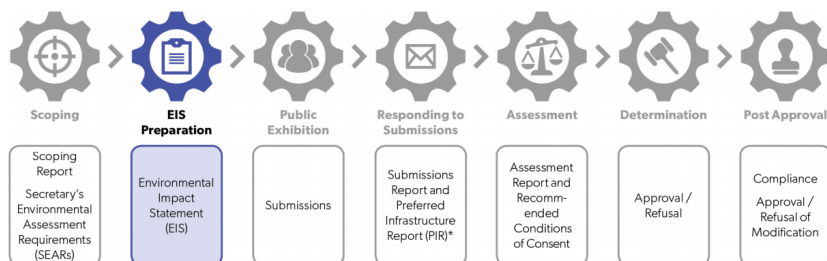
PROJECT UPDATE

Granite Hills Wind Farm is moving into the phase of completing the remaining studies for the Environmental Impact Statement (EIS). Independent specialists will complete studies on flora and fauna, visual amenity, noise levels, hydrology, traffic management, bushfires, waste, community and more. The studies will be very detailed and are required to meet the requirements set out in the Secretary's Environmental Assessment Requirements (SEARs) for submission to the NSW Department of Planning, Industry and Environment (DPIE) as part of the EIS. The DPIE review period includes a statutory public exhibition period of 30-45 days.

COVID-19 IMPACTS ON GRANITE HILLS WIND FARM PROJECT

The studies noted above were anticipated to commence early in April. Unfortunately these studies have been delayed due to COVID-19 impacting the project timeline. Timing of study commencement is still being determined. Given the project's significance to the State of New South Wales and its energy security, the project team will work closely with the independent specialists to progress Granite Hills Wind Farm as soon as possible. Subject to further delay, the studies for the EIS are expected to be finalised in early-mid 2021 with the submission available for public review and feedback to follow. Please review project timeline for more detail.

PREPARING AN ENVIRONMENTAL IMPACT STATEMENT



An EIS is a publicly available document that provides information on a project, including its environmental impacts and mitigation measures. It is used to inform development consent decisions by state departments, in the case of Granite Hills, the DPIE is the consenting authority. The EIS plays a critical role in the process of identifying, predicting, assessing, evaluating and mitigating the environmental, social, economic and other relevant effects of development proposals. The DPIE review period includes a statutory public exhibition period of 30-45 days when members of the community are encouraged to lodge their submissions.

WELCOME

Our newsletters focus on updating you about the project, sharing any news, events or engagement activities in the community.

Visit the website today and register your interest to receive these updates about the project via email.

ABOUT THE PROJECT

Granite Hills Wind Farm is a State Significant Development, situated in Steeple Flat, approximately 12 kilometres South East of Nimmitabel in New South Wales. When complete the project will comprise of up to 23-wind turbines, with approx. 4-6 megawatts capacity and a maximum tip height of 230 metres. The 132 megawatts wind farm would generate enough clean energy for approx. 50,000 homes.

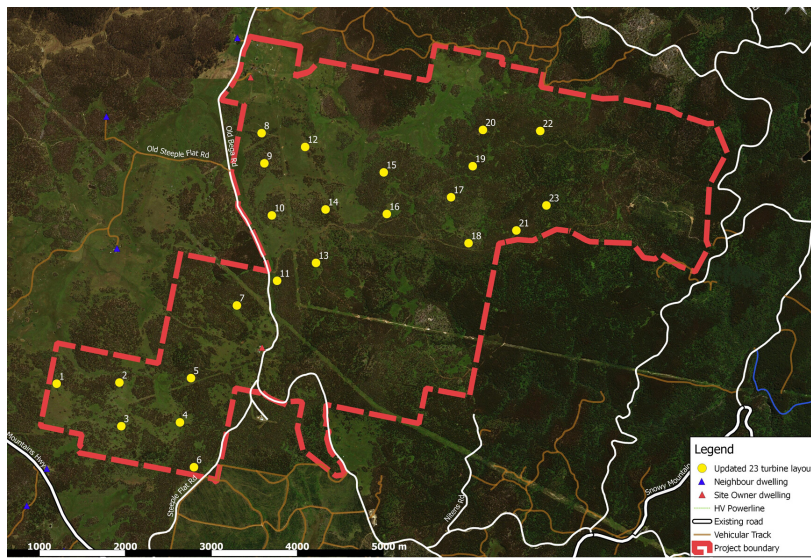
STAY IN TOUCH

If you have any questions or would like to know more about the project, please send an email to granitehills@akuoenergy.com or phone 1800 961 761.

GRANITE HILLS TAKES COMMUNITY CONSULTATIVE COMMITTEE (CCC) ON VOLUNTARY SITE VISIT

On February 25 2020, Granite Hills Wind Farm hosted a site visit for CCC members as a voluntary commitment to best practice stakeholder engagement under the NSW Wind Energy Guidelines and following a request from the CCC Chair Peter Gordon. CCC members were able to visit the locations, or within a few hundred meters, of approximately 50% of the 23 turbine locations. Other turbine locations could not be accessed due to unsafe road conditions, so two key viewpoints were visited which enabled members to see the remaining locations. Topography, geography and vegetation was discussed. Micro-siting considerations were also discussed. More information on this site visit can be found on granitehillswindfarm.com/consultation/ccc-information.

Minutes of all CCC meetings can be found on the project website. Every meeting is chaired by an Independent Chair, Peter Gordon. Peter can be contacted via peter.gordon@charterpoint.com.au or call 0417 064 767.



Granite Hills Wind Farm Project Map

ELYSIAN WIND FARM

We have had some calls regarding Elysian Wind Farm. Granite Hills Wind Farm and the Elysian project are not connected in any way. Akuo Energy is not involved in the Elysian project. To contact or to find out more about the Elysian project visit www.alintaenergy.com.au

PROJECT TIMELINE

Activity	Expected Date (Q = Year Quarter)
Submission of PEIA	Complete
Reception of SEARs	Complete
Submission of Comm. Referral	Complete
Finalisation of EIS Studies	Q1/Q2 2021
Submission of EIS	Q2 2021
DPIE Public Exhibition (30-45 Days)	Q3 2021
EIS Approval	Q2 2022
Financial Close	Q4 2022
Start Construction (18-24 Months)	Q1 2023
Commercial Operation Date (COD)	Q3 2024

GRANITE HILLS PROUDLY SPONSORS 2020 NIMMITABEL SHOW

Granite Hills Wind Farm was a gold sponsor of the 2020 Nimmitabel Show. We appreciate the efforts of the Show society and were disappointed to hear it was cancelled. We commend the society for proceeding with a smaller version of the show for the community in March.

GRANITE HILLS SUPPORTS RURAL FIRE SERVICE DURING DEVASTATING BUSHFIRE SEASON

Granite Hills Wind Farm welcomed the opportunity to donate funds to the local Nimmitabel Rural Fire Service to support their ongoing initiatives in keeping the community safe throughout the recent bushfire season. Our absolute thanks and respect goes to the men and women involved in their fire fighting efforts.

STAY IN TOUCH

If you have any questions or would like to know more about the project, please send an email to granitehills@akuoenergy.com or phone 1800 961 761